

## Cascade Christmas Stocking by Marji LaFreniere

### Materials:

**Yarn** Cascade 220 yarn in a variety of colours (at least 4 –10), scraps  
**Needles** Size 7 (one 16” circular and one double points)

### Method:

The stocking is knitting in the round from the top down on circular needles and the double pointed needles are for the toe and the heel.

### Cuff:

Cast on **60 stitches** in white onto circular needles. Join, being careful not to twist. Place a marker to mark the beginning of your rounds. Work in stockinette stitch (SSK) (knit every round) for **5 rows**. Break off with white and with 2 colours: knit 2 (**K2**) colour A, **K2** colour B for **1 row**. On the next row, keeping same colours (A & B) **K2** colour A, purl 2 (**P2**) colour B. Work 3 more rows (**4 total**) like this and break off both colours (unless you want to use one of them in the next section. You are now done with top rolled edge and 2-colour ribbing. From this point you will work in **SSK** with **2 colours** at the same time from the pattern charts (Group 1–3). Every time you change chart patterns, change colours!

### Patterns:

Pick a chart from **Group 1**. When you are finished with that chart, pick a chart from **Group 2**. After you finish this chart, pick an “allover” pattern from **Group 3** (this will be the main part of the stocking. Work from this chart, repeating the pattern until stocking measures **12–13”** from beginning. This is where the heel will be and you will knit a piece of scrap yarn now and keep going to the toe. Then when you are done, you will remove the scrap yarn and knit the heel.

**Knitting in the scrap yarn:** On the next row, keeping in pattern, knit around until there are 15 stitches before the marker. Let go of your 2 colours and with a length of scrap yarn in a contrasting colour knit across the next **30 stitches** (15 stitches before and 15 stitches after the marker). Drop scrap yarn and slide these 30 stitches back onto the left hand needle (this should bring you back to where you dropped your 2 colours) and continue with your 2 colours as before -- pretend that the scrap yarn is not there and keep to your pattern. Knit until your stocking measures **14–15”** long, or about **2–2½”** past scrap yarn. Next pick another pattern from **Group 1** and after you finish that chart you are ready to begin the toe.

### Toe:

Transfer to double pointed (**dp**) needles as follows. Knit **15** onto the first needle, **30** stitches onto the second, and **15** stitches onto the third. Work **2** rounds even.

**Decrease round:**

Needle 1: SSK, then work 2 stitches from end; K2 tog,

Needle 2: SSK, then work 2 stitches from end; K2 tog,

Needle 3: SSK, knit until end of round.

Work decrease round **EVERY OTHER ROUND** until there are **28** stitches left. Then leave stitches as they were on the 2<sup>nd</sup> needle and put remaining stitches all on one needle and **graft** toe stitches together OR **bind off** and sew a very neat seam across toe stitches.

**Heel:**

Return to where you knitted in the piece of scrap yarn. Carefully pick out scrap yarn and pull all available stitches on a double pointed needle. You will find some of the stitches on the “toe side” of the hole will be ½ one colour and ½ another since you are really picking up the bottom loops of the 2-colour knitting. Take it slowly and do one stitch at a time. Pick up at “corners” an extra stitch so that there is not a gap. Set up stitches on your needles the same as you did for the toe. Beginning of round is center back of sock. If you have an extra stitch or two, decrease them in the first round. Then work same for toe.

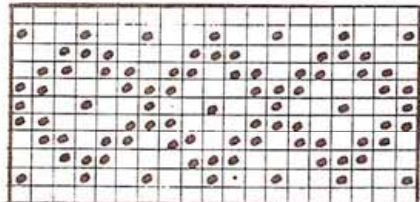
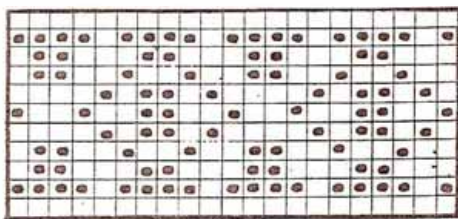
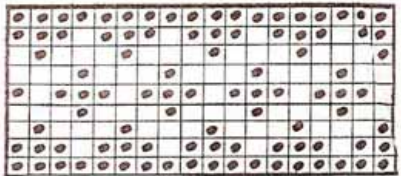
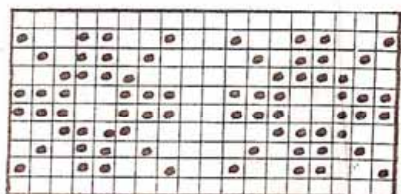
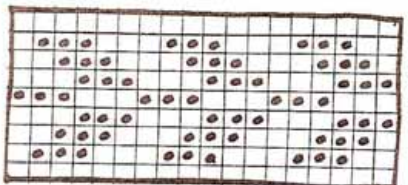
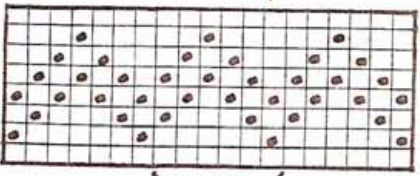
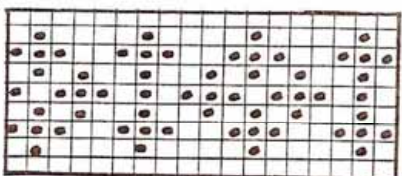
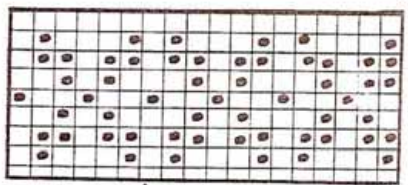
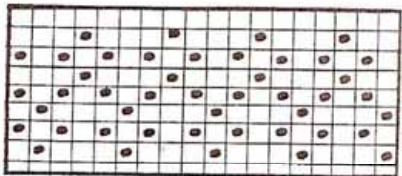
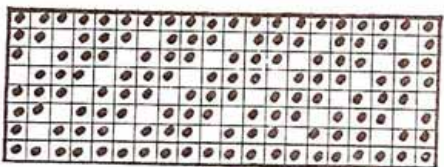
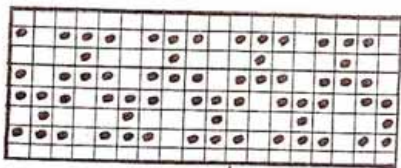
**Finishing:**

Braid some lengths of yarn together to make a loop for hanging the stocking.

# GROUP 1

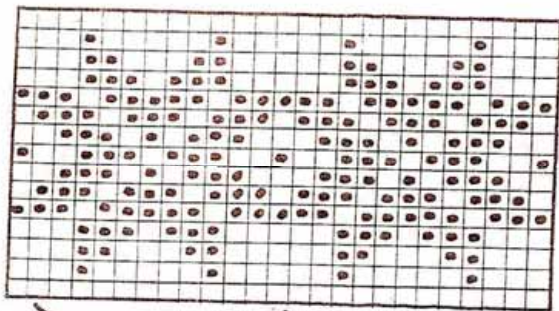
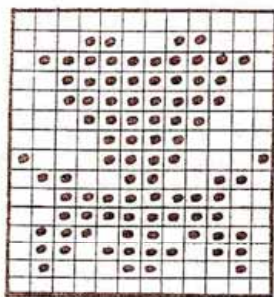
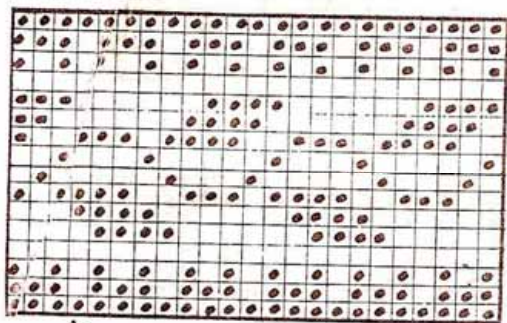
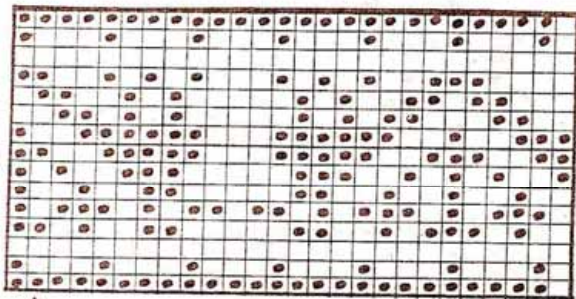
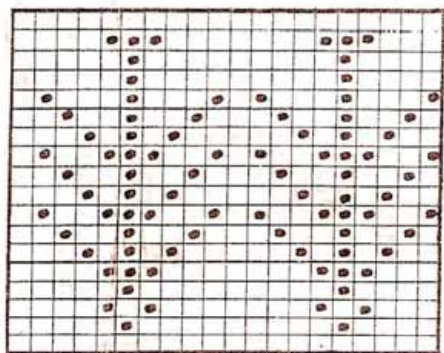
~ = REPEAT

↑ = START



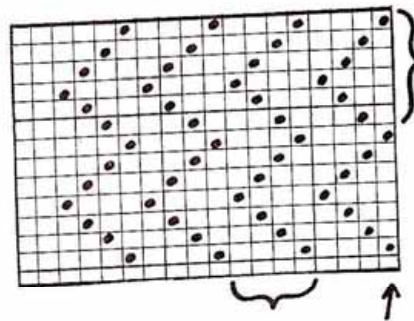
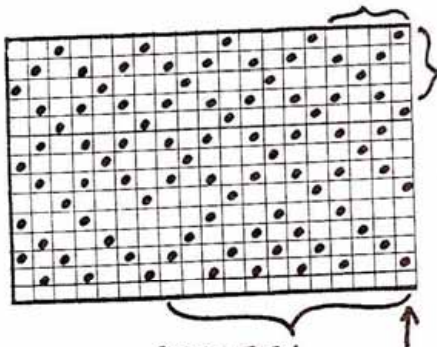
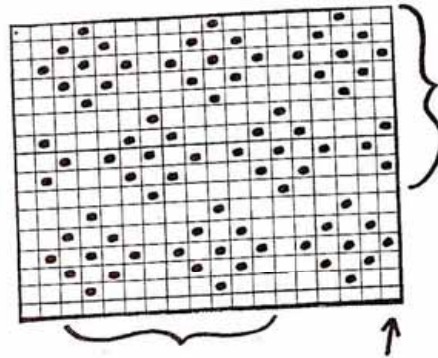
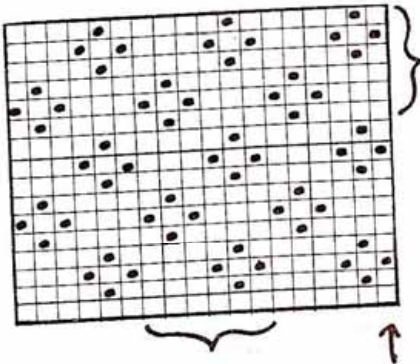
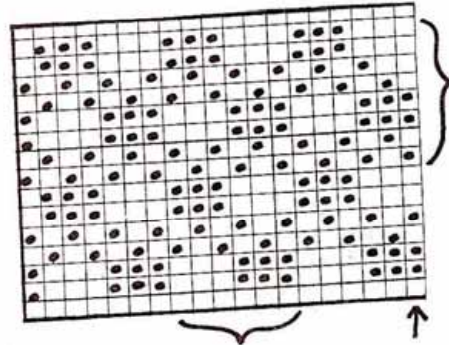
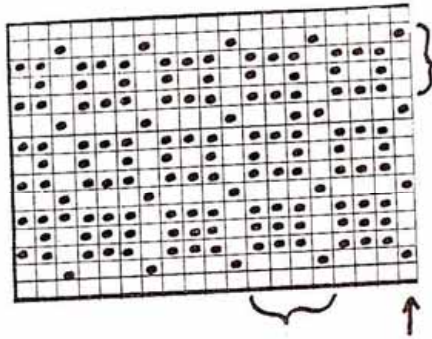
# GROUP 2

⏟ = REPEAT    ↑ = START



# GROUP 3 - ALLOVER PATTERNS

⏟ = REPEAT    ↑ = START



START, THEN  
REPEAT TOP  
SECTION ONLY